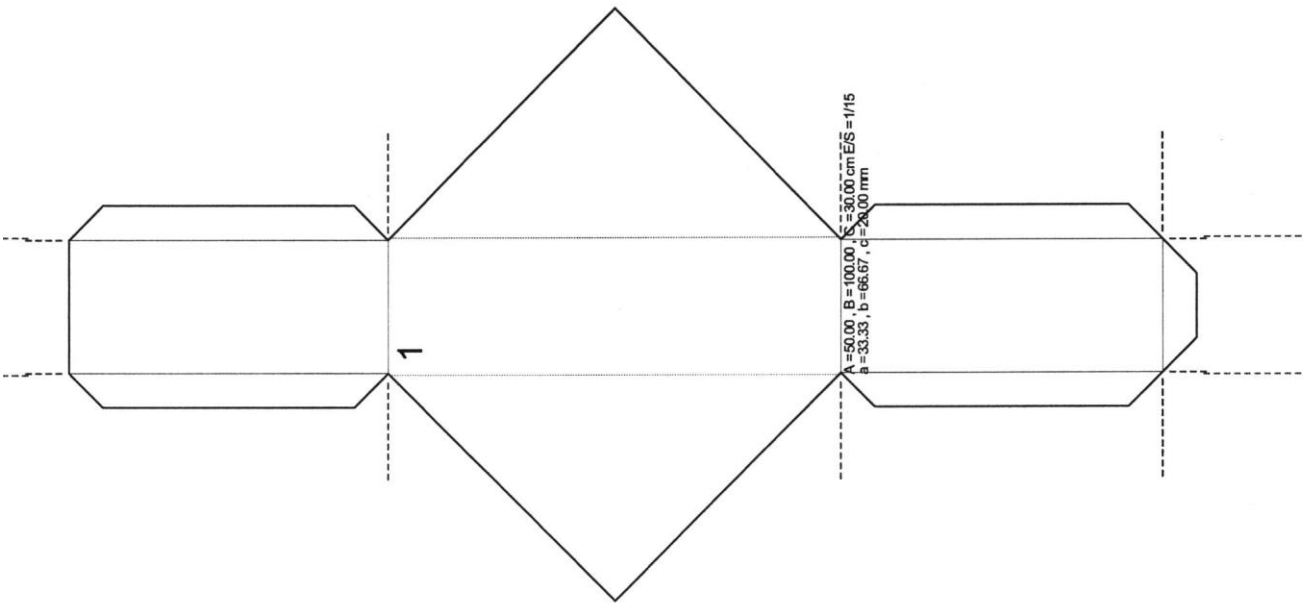


A = 90.00, B = 100.00, S = 30.00 cm $\bar{E}\bar{S} = 1/15$
a = 33.33, b = 66.67, c = 20.00 mm



A = 90.00, B = 100.00, S = 30.00 cm $\bar{E}\bar{S} = 1/15$
a = 33.33, b = 66.67, c = 20.00 mm